

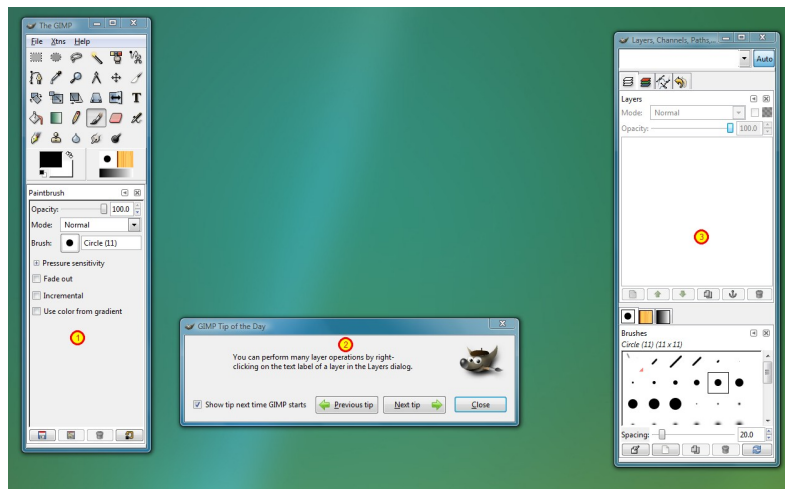
GIMP Basics

Welcome to the GIMP

Kind of like a free Photoshop, the GIMP (which stands for GNU Image Manipulation Program) allows you to do pretty much anything with images.

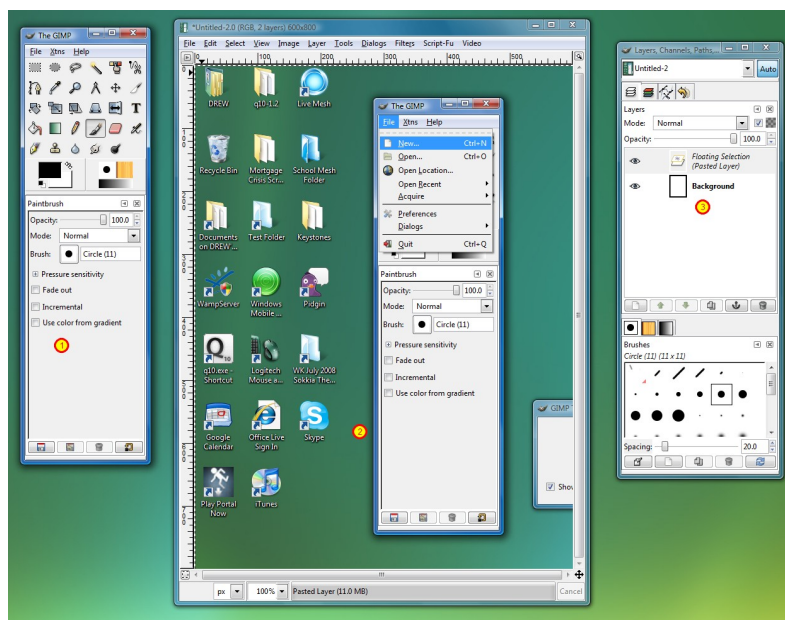
1. Tool Box
2. Tip of the Day (or the startup)
3. Layers and history panel.

Although the GIMP can do many things, this tutorial is designed to show you how to crop an image, recolor an image black and white, slice and move an object and how to save an image.



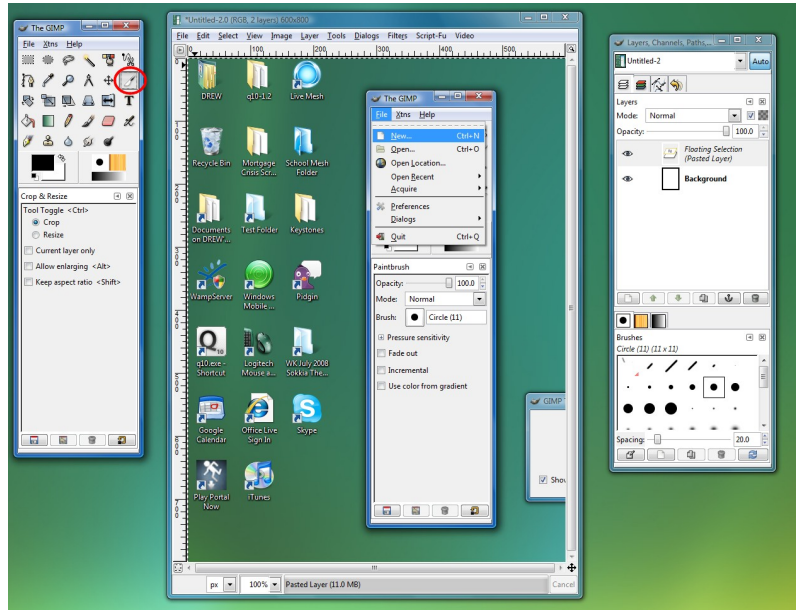
Opening an image

1. We open an image by clicking on File-->Open in Panel 1 (Tool Box panel).
2. The image appears in Panel 2, the workspace (you can think of it as a digital pasteboard where you are looking at the photo in the middle of your work area which is flanked by tools and information pertaining to the object you are working on).
3. Here you can see the layers in the file. In this case I pasted this image into the GIMP



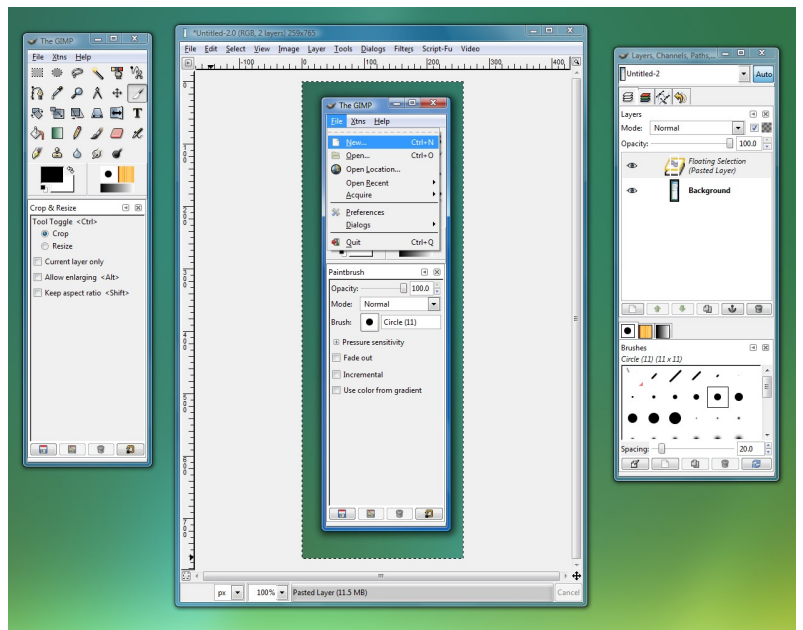
Cropping an image

The cropping tool is located in the toolbox (circled in red). Select it and draw a box around the area you want to keep.



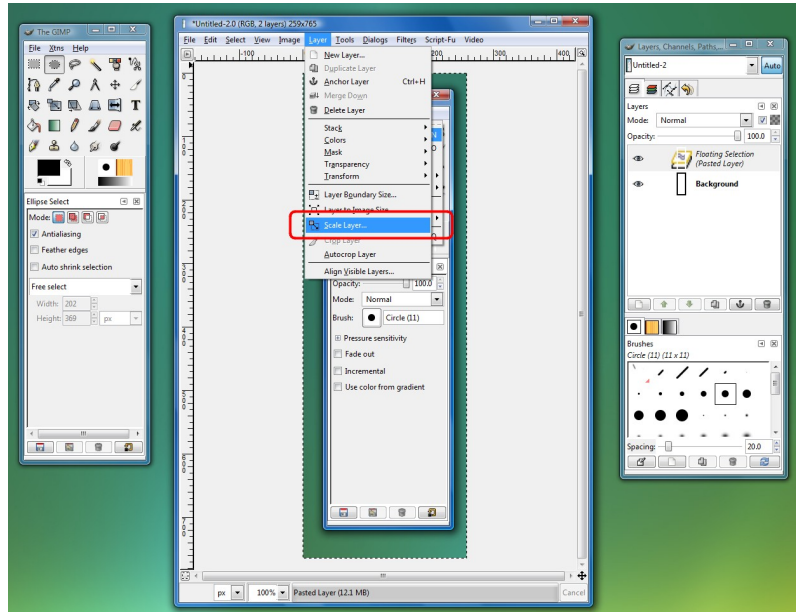
Results of the Cropped Image

Here are the results of the cropped image.



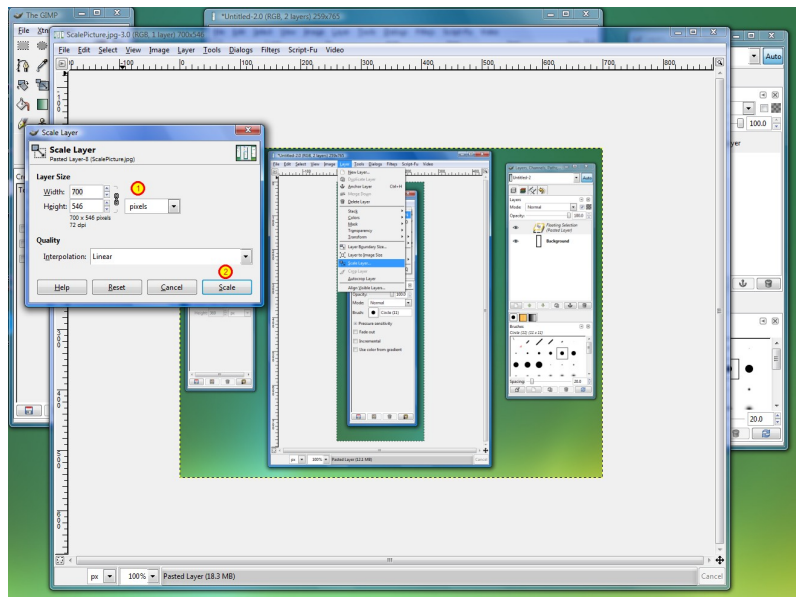
Scale Image

1. To resize an image, click on Scale Image



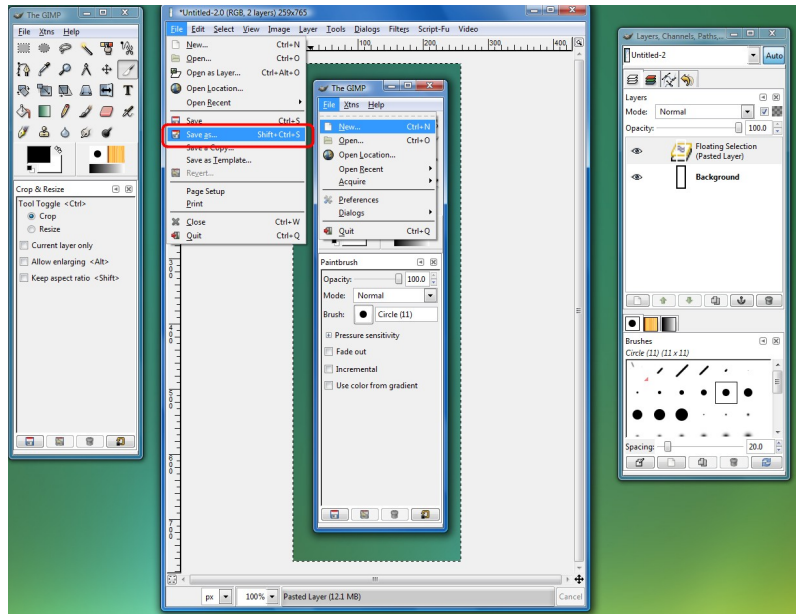
Scale Image Dialogue box

1. In the Scale Image Dialog box, you can resize the image by adjusting the width and height.
2. Click on "Scale" to scale the image.



Saving an Image

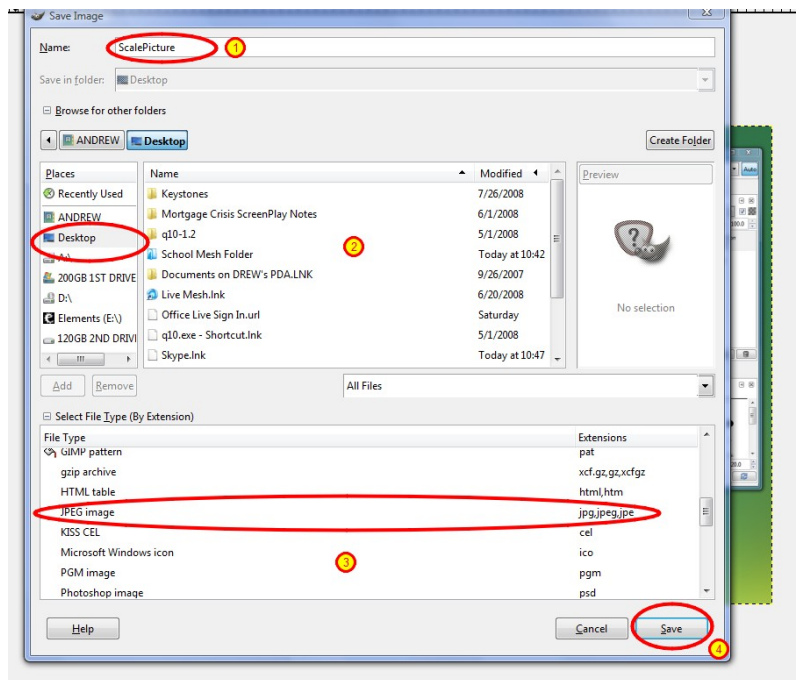
To Save an image, select File-->Save as from the main work area where the image is shown.



Save the image we scaled as a JPEG

Here is the scaled picture being saved as a JPEG

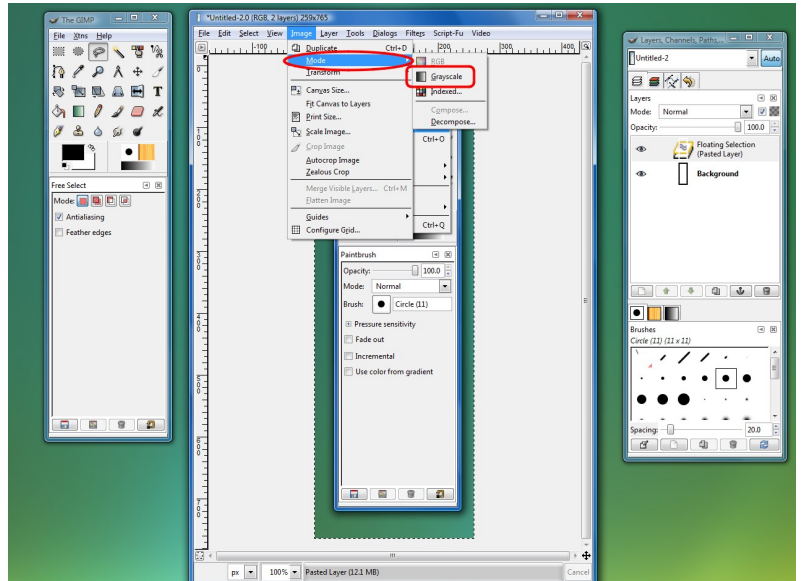
1. Name the file
2. Location (in our case it is on the desktop)
3. Select the File Type (the GIMP has tons of these, but we want JPEG)
4. Click Save to save the file.



To Recolor an image Black & White

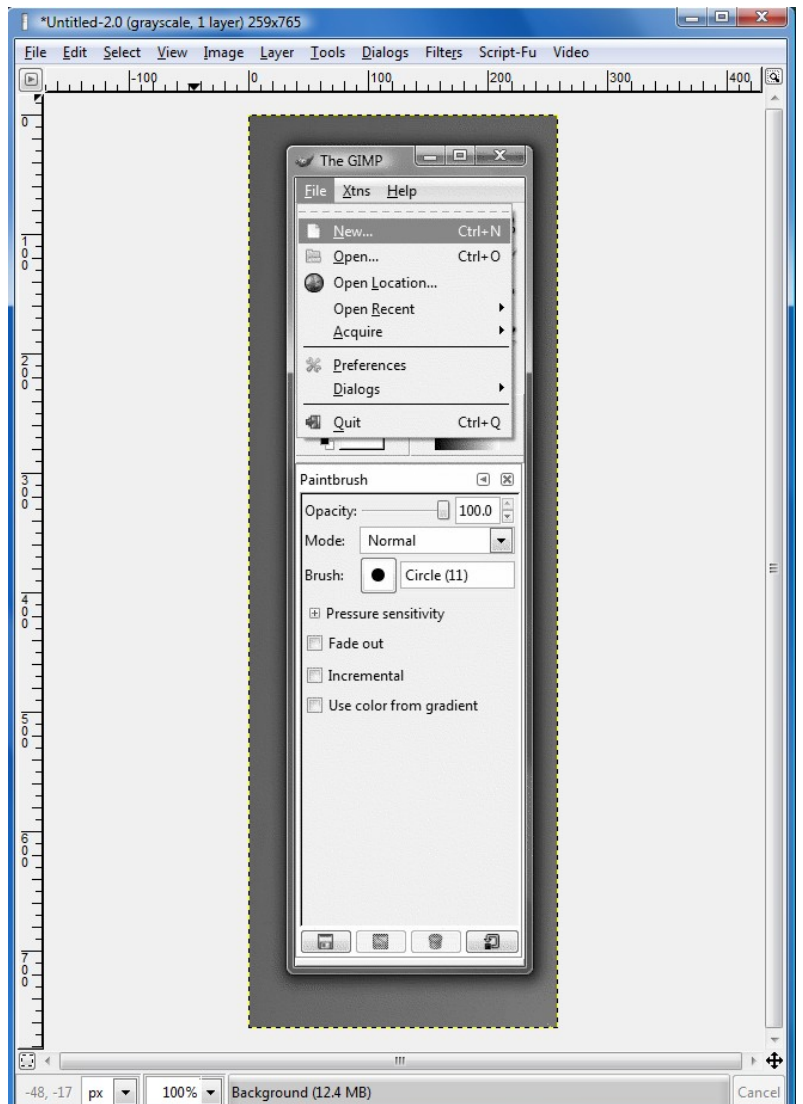
Click on Image-->Mode-->Black & White

You can also work with other colors here (B&W is just a common request)



Results of the Mode Transformation to Black & White

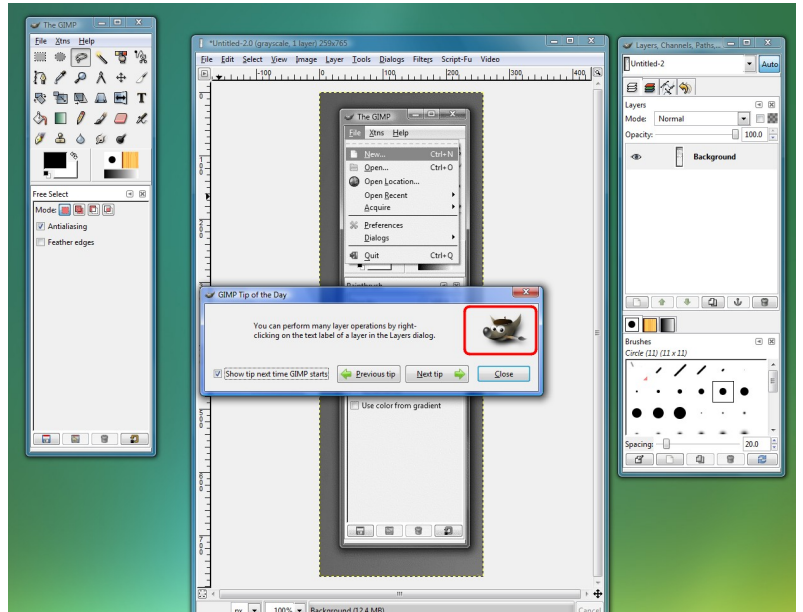
The transformation applied in one click.



Moving Wilbur's head...

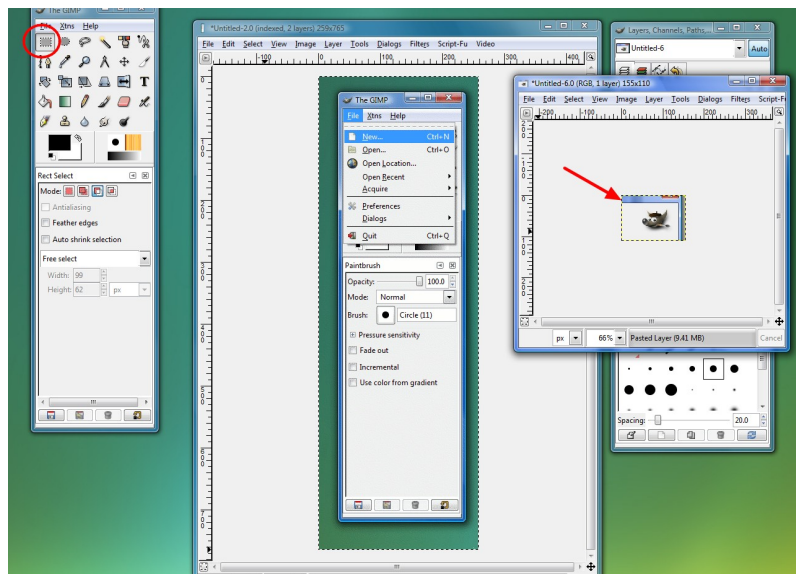
Wilbur is the mascot of GIMP. In this example we will move Wilbur head into the white space on our main image.

1. First we will take a screen shot and crop it so that all we can see is his head.



Moving Wilbur's Head (continued)

1. OK we have Wilbur and we have the main image. We are going to use the selection tool (circled in red) and draw a box around Wilbur.
2. We will Edit-->Copy the selected area (Wilbur)
3. We will edit paste into the other window where the dialog box is.

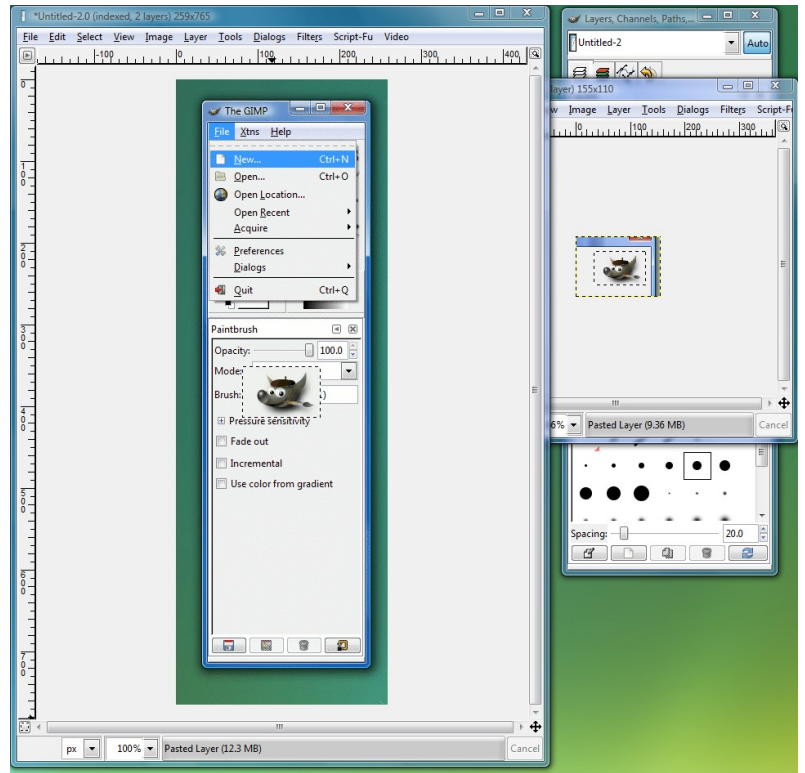


Select Wilbur



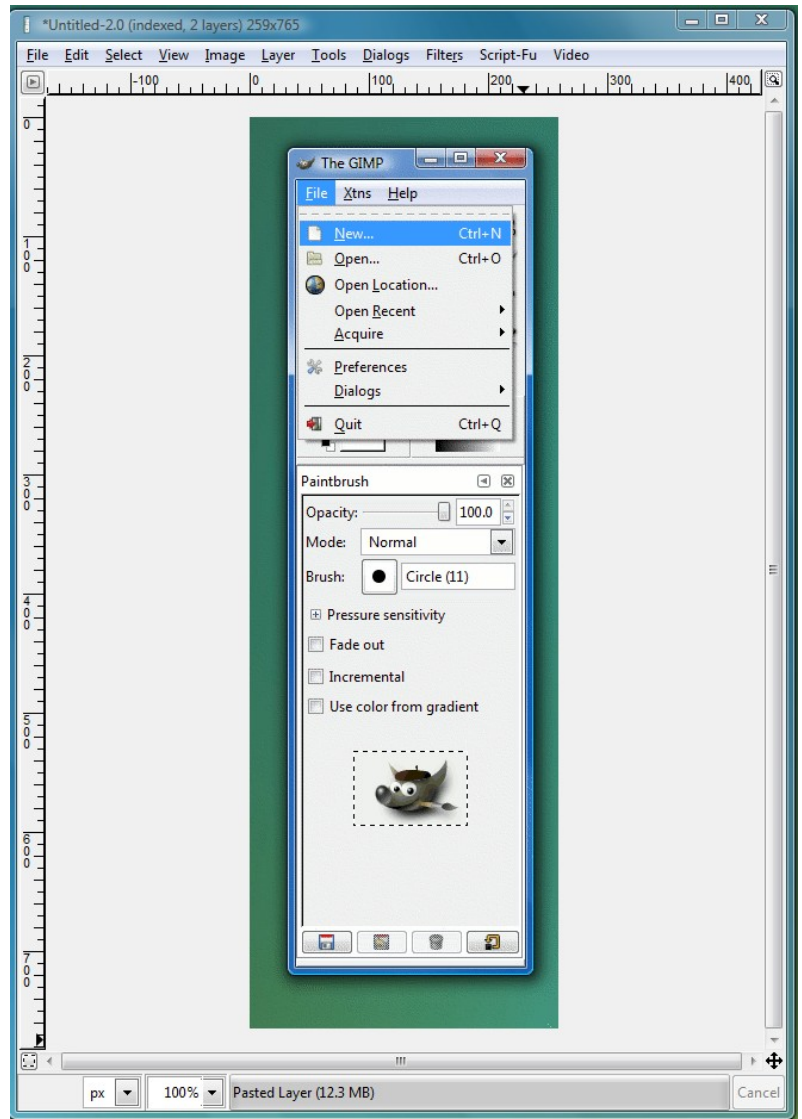
Wilbur is now ready to move into position...

1. Wilbur is now pasted as a new layer in the window containing the screen shot.
2. We can now click on him and move him into position for our next screen shot.



Wilbur finds a perfect position

Note, when you click away from him, the marching ants (or the fence around Wilbur) will disappear.



GIMP Resources

For More on the GIMP:

Download it at home:

<http://www.gimp.org/>

Help and Tutorials:

<http://www.gimp.org/tutorials/>

